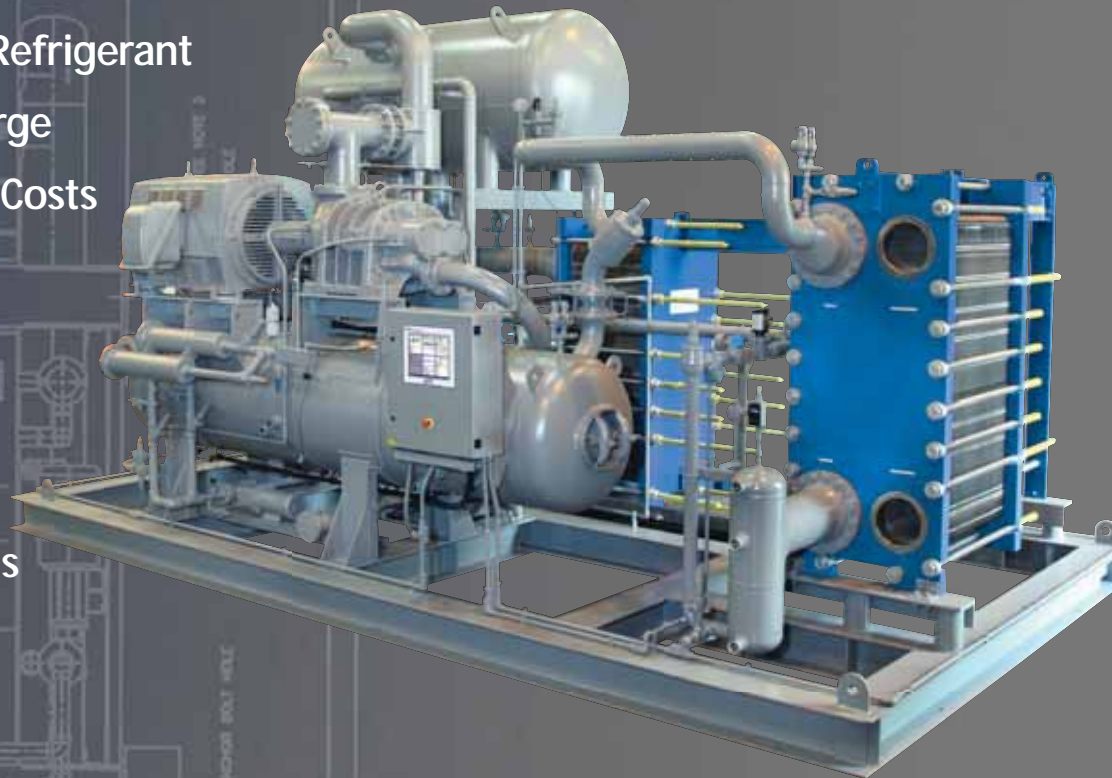




GALAXYTM Series

High Efficiency Packaged Chillers

- NH₃ – A Sustainable Refrigerant
- Low Refrigerant Charge
- Reduced Installation Costs
- Quality GEA Plate and Frame HX
- Reduced PSM Requirements
- GForceTM Touch-Screen Controls



Galaxy™ Series High Efficiency Packaged Chillers

GEA FES, Inc. is recognized around the world as a leader and innovator in the industrial refrigeration market. Taking this leadership and innovation a step further, GEA FES introduces the Galaxy™ Series packaged high efficiency chiller packages...Designed for easy installation, service and reliable operation.

Low Refrigerant Charge

Using high quality GEA plate and frame heat exchangers allows for a low refrigerant charge saving installed costs and increasing operating efficiencies. Rather than pumping large amounts of NH₃, various heat transfer fluids are used to keep NH₃ in the engine room and away from processing and storage areas.

Reduced Installation Costs

With the Galaxy™ Series chiller there is less NH₃ field piping required. This simplified piping requirement and time saving electrical connections keep installation costs significantly lower.



GForce™ Control Panel

This microprocessor 'touch screen' control system is accepted around the world as an industry standard. The operator-friendly system offers chiller system control, screw compressor control, compressor sequencing, and many other options...and all of this is available with a secure Ethernet network.

GEA Plate and Frame Heat Exchangers

The model LWC offers big performance in a small package. The LWC uses 0.6 mm, 316 stainless as standard heat transfer material. Titanium is also available for calcium chloride applications. Neoprene, NBR, NBR High Temperature, EPDM, EPDM High Temperature, Vitron are used for the standard gasket material. These laser welded models also offer all of the maintenance and service benefits of gasketed plate and frame heat exchangers.

Galaxy Model Number	Compressor Model Number	Nominal Capacity 20F Leaving Glycol (TR)	Motor Size 20F Glycol (HP)	Nominal Capacity 42F Leaving Water (TR)	Motor Size 42F Water (HP)
G160	160GM	155	250	245	250
G195	195GM	190	300	305	300
G230	230GLX	235	350	380	350
G290	290GLX	295	400	470	450
G340	340GLX	335	450	525	500
G400	400GLX	405	600	640	600
G475	475GLX	460	600	730	700
G565	565GLX	550	700	875	800

Note: Capacities are based on cooling water available at 85F

GEA FES, Inc.

3475 Board Road
York, PA 17406

PH: 717-767-6411 FAX: 717-764-3627

E-Mail: sales.fes@geagroup.com

Web: www.geafes.com



Form: GALAXY 03-11