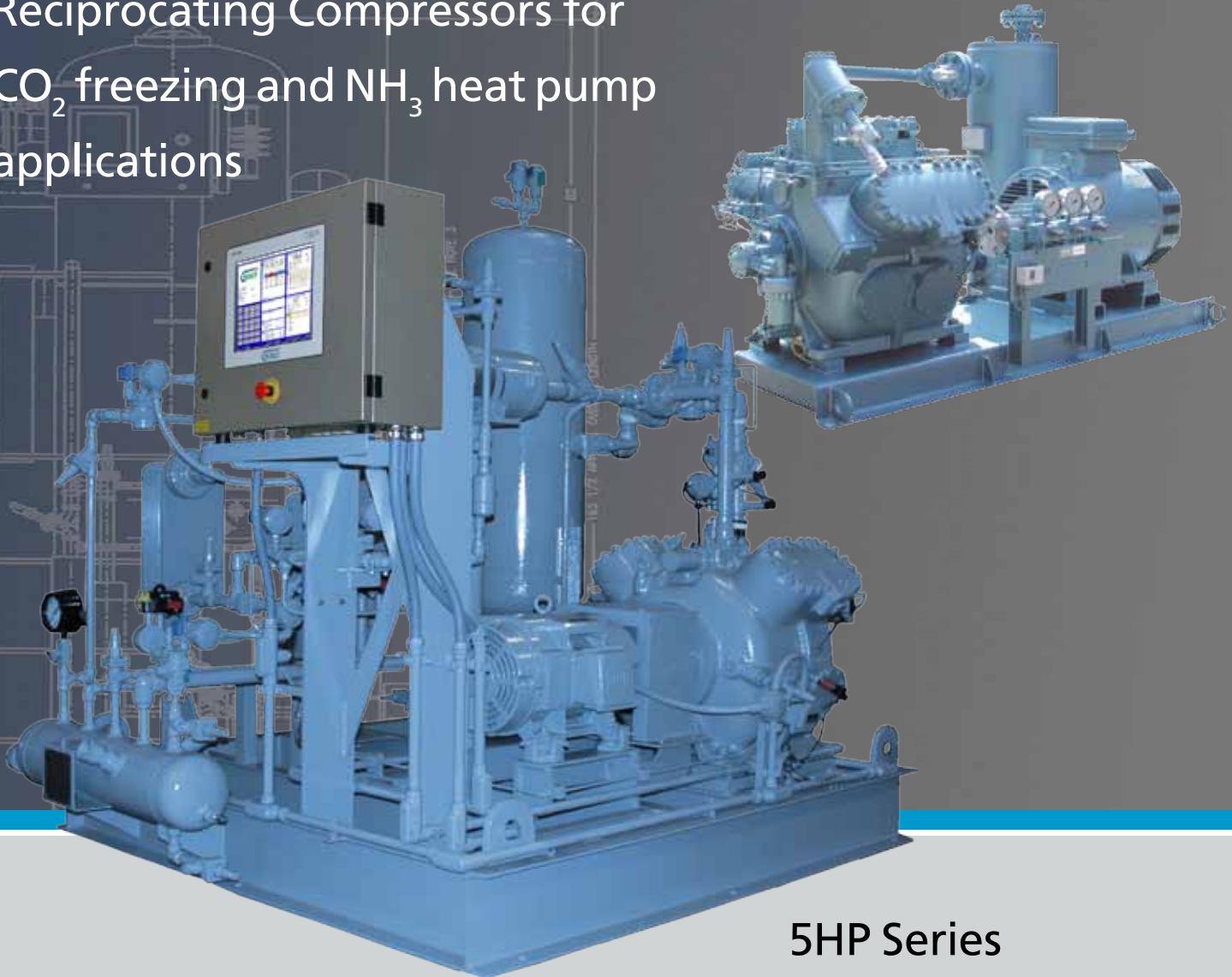


Reciprocating Compressors for  
CO<sub>2</sub> freezing and NH<sub>3</sub> heat pump  
applications



5HP Series  
60 cfm to 120 cfm

# 5HP Product Range

Since its introduction in 2006, the 5HP series high pressure reciprocating compressor, for use in CO<sub>2</sub> cascade refrigeration systems, has become a well accepted and reliable product in the industrial refrigeration market. Four (4) single stage models, ranging from 3 to 6 cylinders, cover a wide range of capacities. The 725 psig design allows for CO<sub>2</sub> hot gas defrost in most cases.

With the high pressure design features, the 5HP series reciprocating compressor has been developed for use in the emerging NH<sub>3</sub> heat pump market. At 725 psig design pressure, water temperatures close to 170°F are possible.

### Features of the Grasso 5HP series:

- 725 psi discharge design pressure for high intermediate temperatures
- Up to 435 psi pressure difference across compressor
- Suitable for variable speed, 500 to 1500 RPM
- Capacity control steps per cylinder
- Heavy duty thrust bearing for longer bearing life
- PEEK valves optimized for extended valve life and improved efficiency
- Hot gas defrost capabilities



Model (Single stage)	Swept volume at 1500 RPM (CFM)	CO <sub>2</sub>		NH <sub>3</sub>	
		Cooling cap. -60°F/0°F TR	Cooling cap. -40°F/20°F TR	Heating cap. 95°F/175°F (MBH)	Heating cap. 95°F/160°F (MBH)
35HP	59	30	44	915	950
45HP	79	40	58	1215	1265
55HP	99	50	72	1510	1575
65HP	119	60	86	1820	1900

## GEA Refrigeration North America, Inc.

3475 Board Road  
 York, PA 17406  
 PH: 717-767-6411 FAX: 717-764-3627  
 E-Mail: sales.fes@gea.com  
 www.geafes.com



Form: CO2-0812