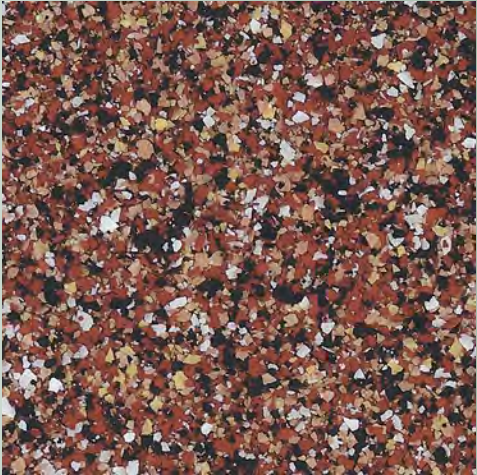
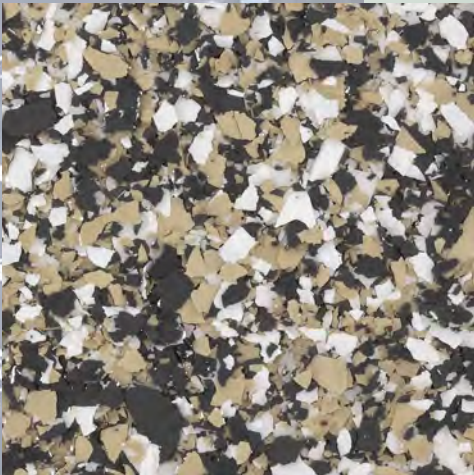




DUR-A-FLEX[®]

EPOXY
FLOORING
SYSTEMS



DUR-A-FLEX[®]
INNOVATION FROM THE FLOOR UP




Exceptional durability. Great looks. Outstanding value. The Dur-A-Flex® family of epoxy flooring systems offer the most protection for your money, providing superior resistance to chemical spills, heavy equipment and continuous traffic. Install a seamless, sanitary, easy to maintain surface that works as hard as you do, in any environment.

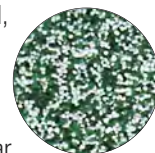
FLOOR SYSTEMS

Dur-A-Shield II

Consisting of a solvent-based epoxy prime coat and a finish coat, Dur-A-Shield creates a high strength surface that is high gloss, easy to clean and resistant to abrasion, oil, gasoline, acids and solvents.

Dur-A-Quartz

Deluxe, multi-colored quartz aggregate fused with clear 100% solids epoxy provides resistance to solvents, acids and other chemicals. Available in two grades: Q28 (fine) and Q11 (coarse), this system is the top choice for decorative flooring applications. Certified by  The National Floor Safety Institute (NFSI).



Q-28



Q-11

Dur-A-Gard and Dur-A-Gard SL

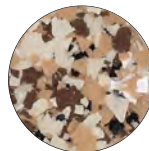
Dur-A-Gard forms a smooth, high gloss finish and is also available in an orange peel finish formulation. If standard slip resistant performance is required, Non-Skid Grit can be added during the application process. Dur-A-Gard SL contains special fillers, for self leveling applications where thicker systems from 35 -120 mils are desired.



MICRO

Dur-A-Chip

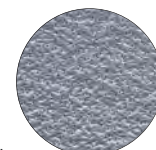
This decorative resurfacer fuses multi-color chips with 100% solids epoxy to provide a truly unique look. Chips are available in Macro and Micro sizes.



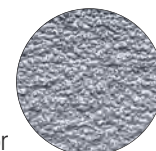
MACRO

Shop Floor

Natural colored quartz aggregate and pigmented Dur-A-Glaze Shop Floor epoxy make this the affordable industrial resurfacer. A solid color opaque, monolithic surface hides imperfections and stands up to abuse. Available in standard and coarse textures.



STANDARD



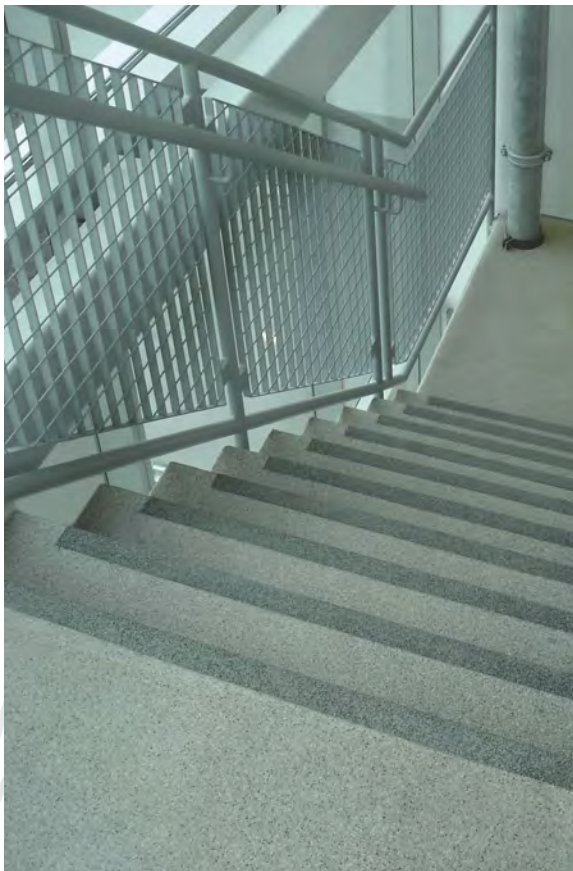
COARSE

Dur-A-Crete

This heavy duty, trowel applied resurfacer, incorporating epoxy resins and specially graded aggregates, is ideal for repair of badly spalled and eroded substrates.

Mica-Flex E

A decorative floor system comprised of coats of 100% solids epoxy, natural mica flakes and a durable, UV resistant urethane topcoat. Mica flakes are available in macro and micro sizes.



ESD FLOOR SYSTEMS

Dur-A-Gard ESD

An epoxy-based ESD system offering low odor with a smooth finish. Good abrasion and chemical resistance in a two-component system.

Armor-Stat ESD

An epoxy-urethane ESD system offering superior abrasion and chemical resistance makes it one of the longest-wearing ESD floor systems available in the industry. The three-step system offers our highest static protection from primer through urethane topcoat. Excellent UV resistance ensures consistent color throughout the life of the floor.



FINISH TOPCOATS

Dur-A-Glaze Novolac

This 100% solids, no VOC, epoxy coating is specified as a topcoat when the ability to withstand corrosion and high heat is a priority.

Crete-Gard

Formulated especially for Dur-A-Crete trowel applied mortar systems, this super high viscosity hardener, saves time and material—enabling you to finish your floor with a single coating.

Armor Top®

This three component aliphatic urethane protective coating was formulated for high traffic areas to protect against chemicals and wear. It is recommended as a final topcoat over all Dur-A-Flex epoxy floor systems.

Dur-A-Glaze #5

Our no-odor, fast curing, UV resistant, clear topcoat; recommended for Dur-A-Quartz and Dur-A-Chip decorative floor systems or when an odor free topcoat is required.



CA 01350
COMPLIANT

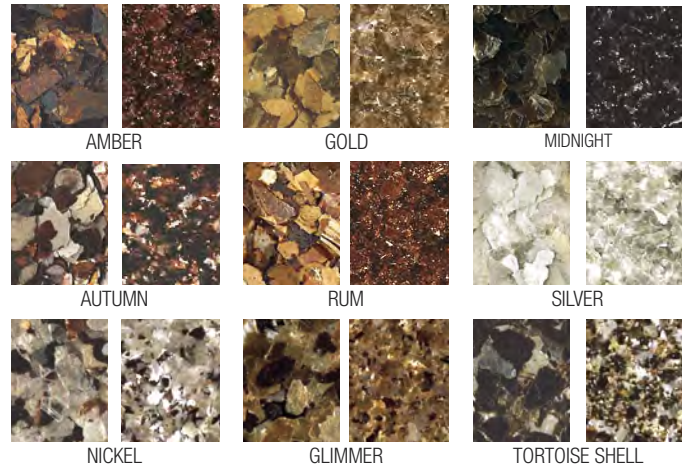
The samples shown are only close approximations and should not be used for specification purposes.
 Contact Dur-A-Flex to obtain actual samples for best color selection.

Standard Colors



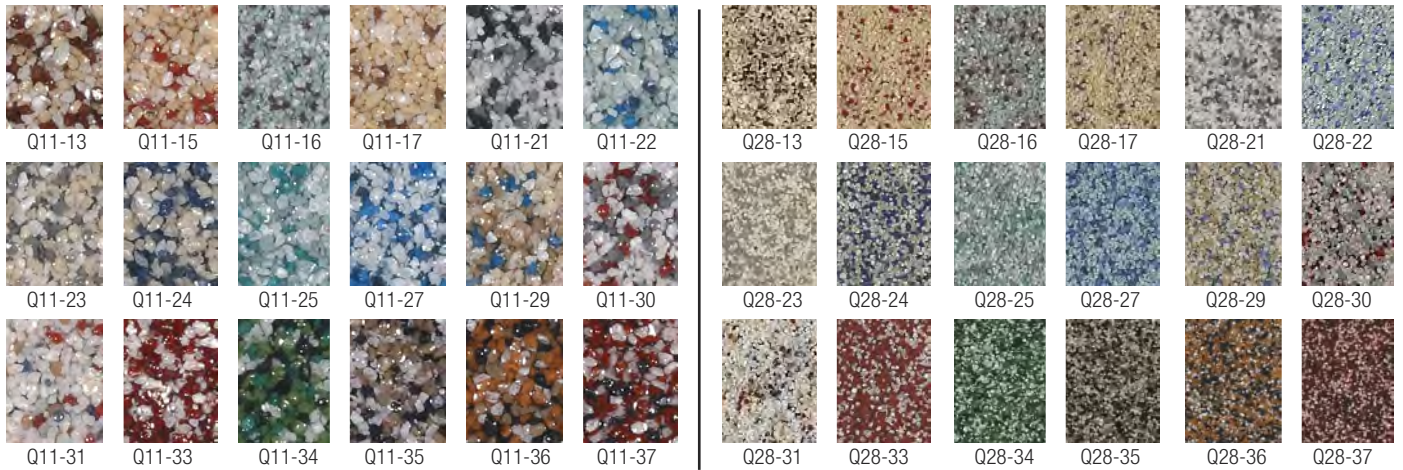
**Not available in Shop Floor

Mica-Flake

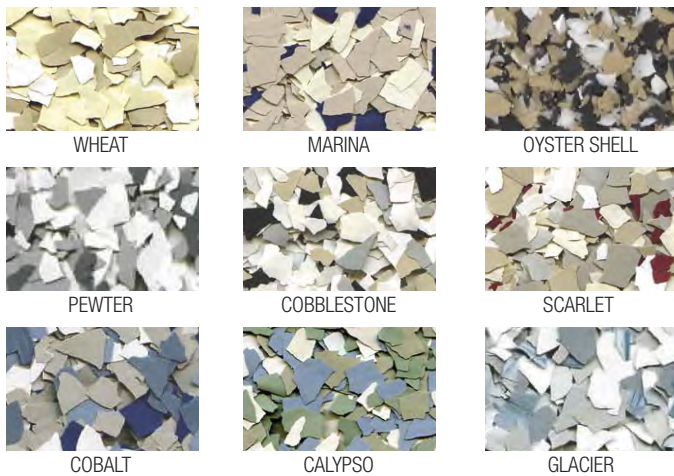


All mica samples shown contain metallic flakes. Available in macro and micro sizes.

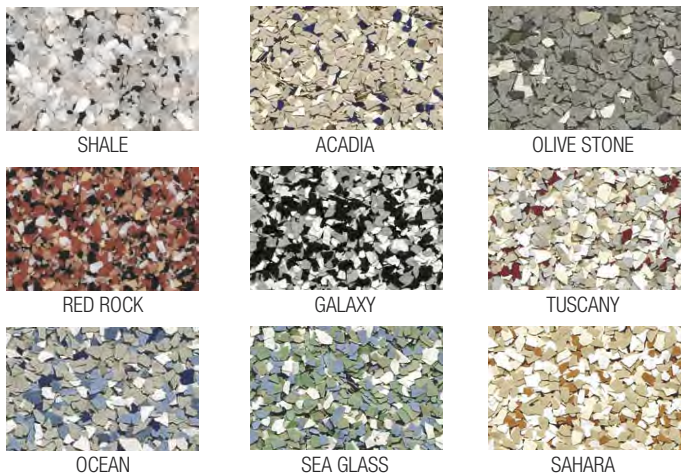
Quartz Blends



Macro Chip Blends



Micro Chip Blends



No one makes it easier to select, specify and install high performance flooring systems than Dur-A-Flex. Every step of the way, you'll experience superior customer service, professionalism and expertise as well as finely tuned processes—all the essentials which contribute to a solid business relationship.

